

INSTRUMENT APPROACH CHART - ICAO

20

18

090°

270°

360°

21

17

MSA 25NM ARP

APP	120.625	STANSTED RADAR	AD ELEVATION	348
TWR	123.805, 125.550	STANSTED TOWER	THR ELEVATION	332
	121.730	STANSTED GROUND	OBSTACLE ELEVATION	
	121.955	STANSTED DELIVERY	912 AMSL	
RAD	136.200	STANSTED DIRECTOR	(580) (ABOVE THR)	
ATIS	127.180, 114.550 (CLN VOR)	STANSTED INFORMATION	BEARINGS ARE MAGNETIC	

LONDON STANSTED

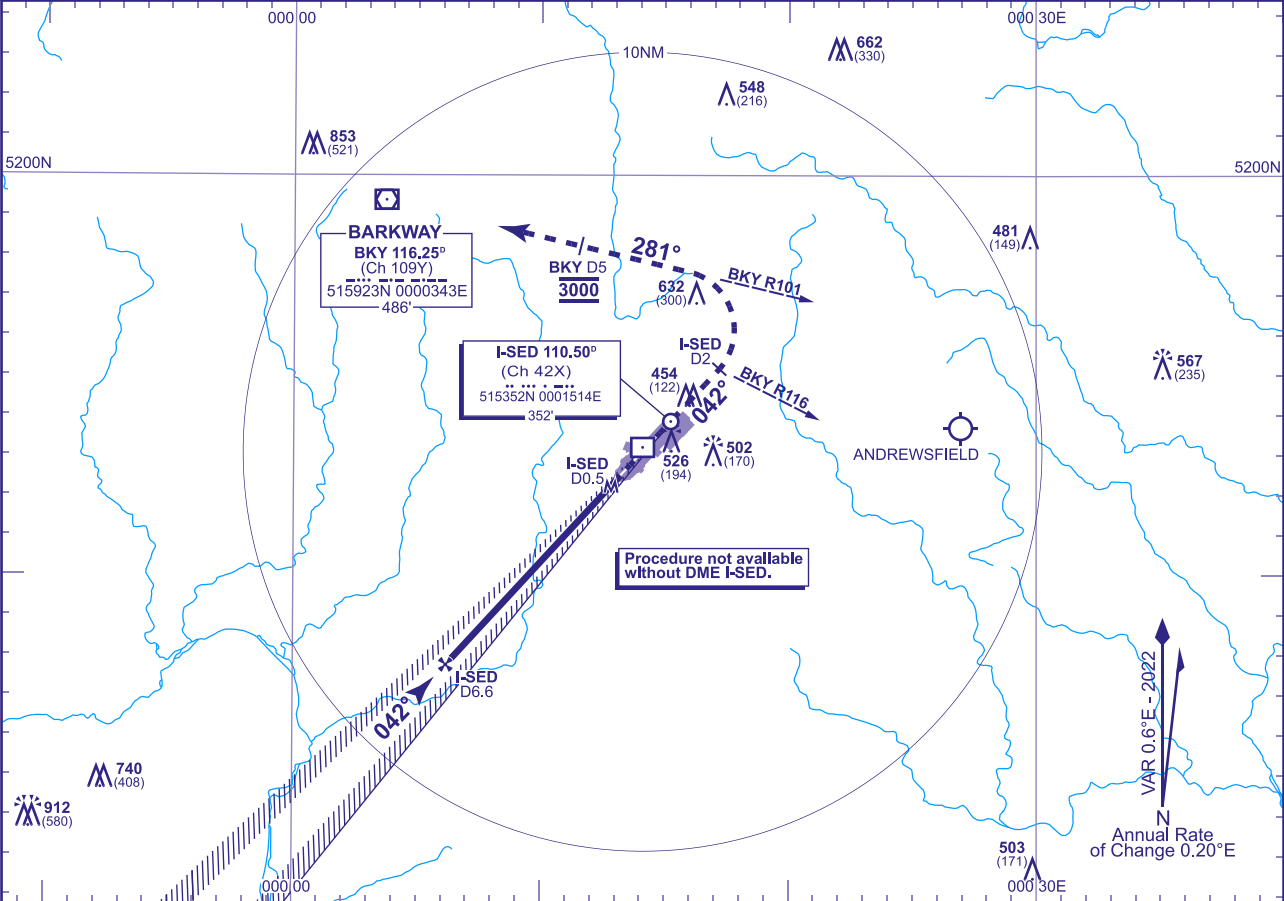
LOC/DME

RWY 04

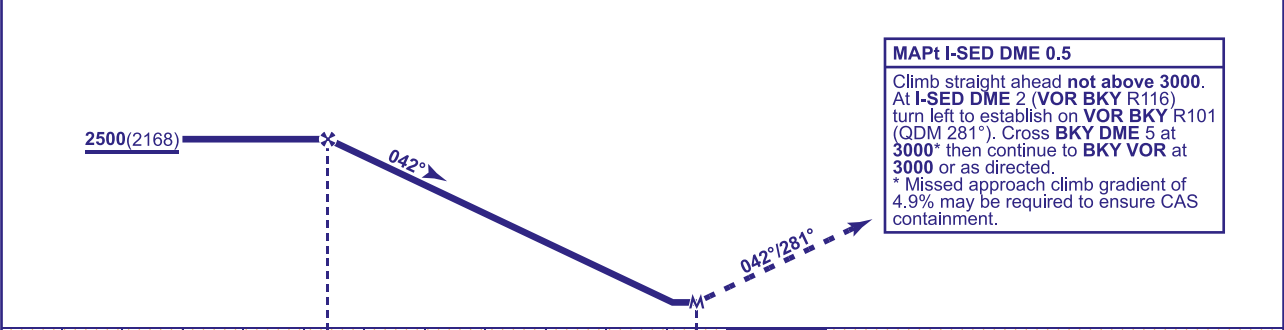
(ACFT CAT A,B,C,D)

TRANSITION ALTITUDE

6000



RECOMMENDED PROFILE Gradient 5.2%, 320FT/NM						
DME I-SED	6	5	4	3	2	1
ALT(HGT)	2300(1968)	1980(1648)	1660(1328)	1340(1008)	1020(688)	700(368)



Aircraft Category		A	B	C	D	Rate of descent	G/S KT	160	140	120	100	80
OCA (OCH)	Procedure	670(338)	670(338)	670(338)	670(338)		FT/MIN	850	740	640	530	420
VM(C)OCA (OCH AAL)	Total Area	900(552)	900(552)	1030(682)	1040(692)							

AIRCRAFT UNABLE TO RECEIVE VOR DME BKY
Advise ATC. Radar direction will be passed for missed approach procedure.

NOTE 1 For initial approaches see AD 2-EGSS-7-16.
2 MAX 185KIAS for MAP until established on BKY R101.

CHANGE (2/25): PANSHANGER DISUSED AD REMOVED.